



DESIGN SHEET

BRAND :		DATE :	05/01/2021`
STYLE :	HOODIE- 003	PRODUCT DESCRIPTION :	COTTON HOODIE
PRODUCT CATEGORY :	OUTERWEAR	REMARKS :	



MAIN LABEL/SIZE LABEL



STANDARD WOVEN
LABEL, POSITION IN CB

POLYESTER ROUND DRAWCORDS
(7MM) & GOLD METAL TIPS ON DRAWCORDS
END.

HOOD LINING DTM JERSEY

10 MM BACK WOVEN
NECK BIND

COATED
METAL EYELETS. 12MM.

CHEST PRINT

BLACK MONOGRAM ON
THE BLACK PATCH LOGO

SELF FABRIC KANGAROO POCKET
AT FRONT, WITH
DTM TOPSTITCHING.
POCKET HEIGHT 22CM. POCKET
WIDTH 30CM POINT TO POINT

SIDE SEAM JOIN:
2NEEDLE -4THREAD OVERLOCK

COLOR



BLACK

2X1 DTM DEFINED RIB AT
CUFFS & HEM. DEPTH OF
RIB 6CM.

DTM 2X1 RIB AT CUFFS AND HEM WITH DTM
FLATLOCK OVER SEAM. RIB DEPTH
6.5CM

FABRIC: COTTON JERSEY



DESIGN SHEET

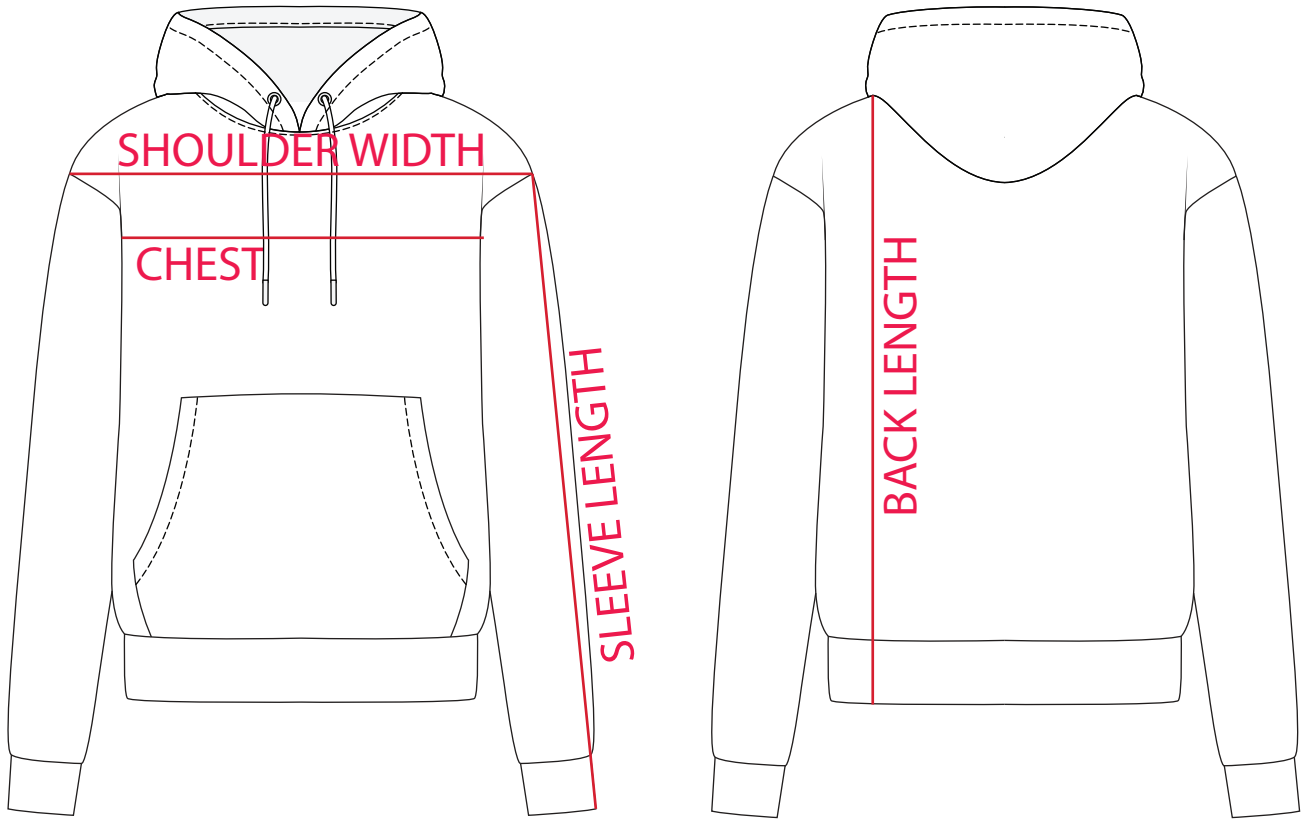
BRAND :		DATE :	05/01/2021`
STYLE :	HOODIE- 003	PRODUCT DESCRIPTION :	COTTON HOODIE
PRODUCT CATEGORY :	OUTERWEAR	REMARKS :	



MEASUREMENT CHART

Size In CM	XS	S	M	L
Chest	111	114	116	121
Back Length	64.5	65.5	67	69.5
Sleeve Length	89	89	91.5	92.5
Shoulder Width	49.5	50.5	51.5	53

HOW TO MEASURE





DESIGN SHEET

BRAND :		DATE :	05/01/2021`
STYLE :	HOODIE- 003	PRODUCT DESCRIPTION :	COTTON HOODIE
PRODUCT CATEGORY :	OUTERWEAR	REMARKS :	

